



Heliport AC Controller with Timer Installation Instructions

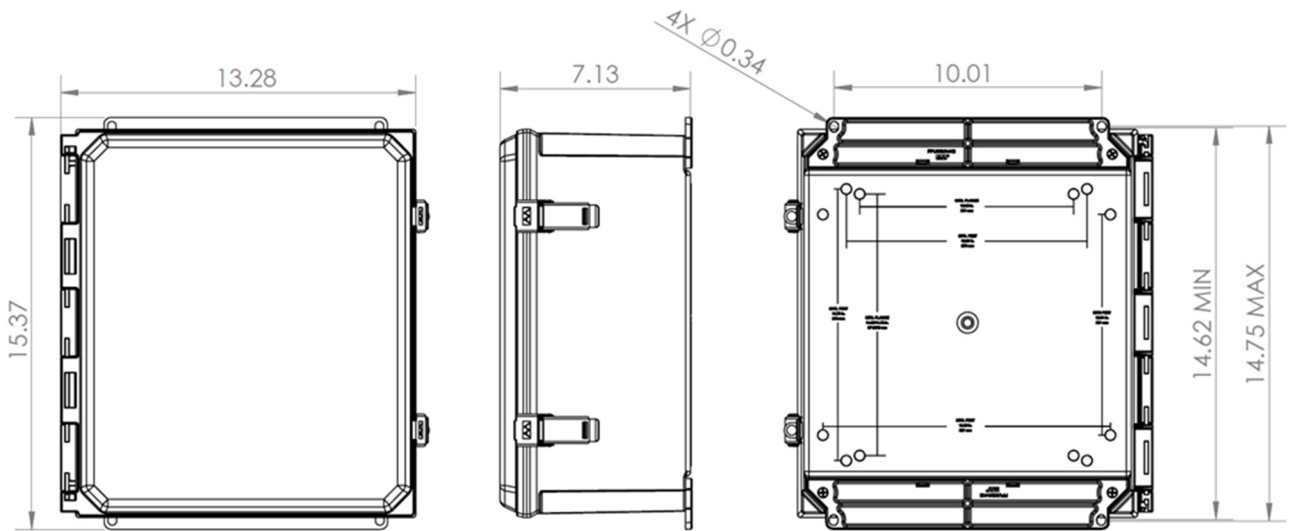
HL-HSC-AC1ACT

Your Heliport Controller has been designed with safety and protection features to provide years of service with minimum maintenance when used properly. Please follow these instructions for proper installation and operation. The Controller is protected from lightning and other transients by a high-quality Surge Arrestor.

CAUTION! This system may have high voltages and currents while it is operating, it is recommended to use high voltage gloves whenever the circuit breaker is ON.

Installation Mounting Instructions

- The controller enclosure is NEMA 4 compliant, and is usually mounted to a wall utilizing the four mounting holes located on the enclosure's mounting tabs (mounting hardware supplied by installer). The overall dimensions of the enclosure body with the mounting dimensions shown above.



Enclosure Showing Mounting Tabs

Mounting Layout

Electrical Installation Instructions



Heliport AC Controller with Timer Installation Instructions

HL-HSC-AC1ACT

- It is recommended to drill two access holes on the bottom side of the enclosure, one for cables into the enclosure, and one for output cabling to the load devices. It is also recommended to use strain-relief or rubber bushings to cushion the wire from the enclosure sharp edges.
- Connections from the AC power source to the controller inputs are shown on the left side of the Wiring Diagram in Figure 1 and listed in Table 1 below.
- Connection from the Controller 120VAC outputs to the Load are shown on the right side of the Wiring Diagram in Figure 1 and listed in Table 1.
-

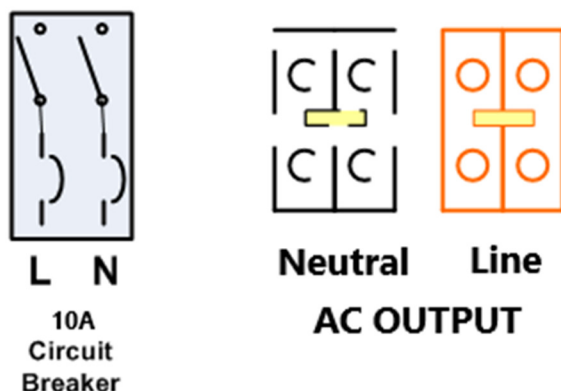


Figure 1: Customer Interface Wiring Diagram

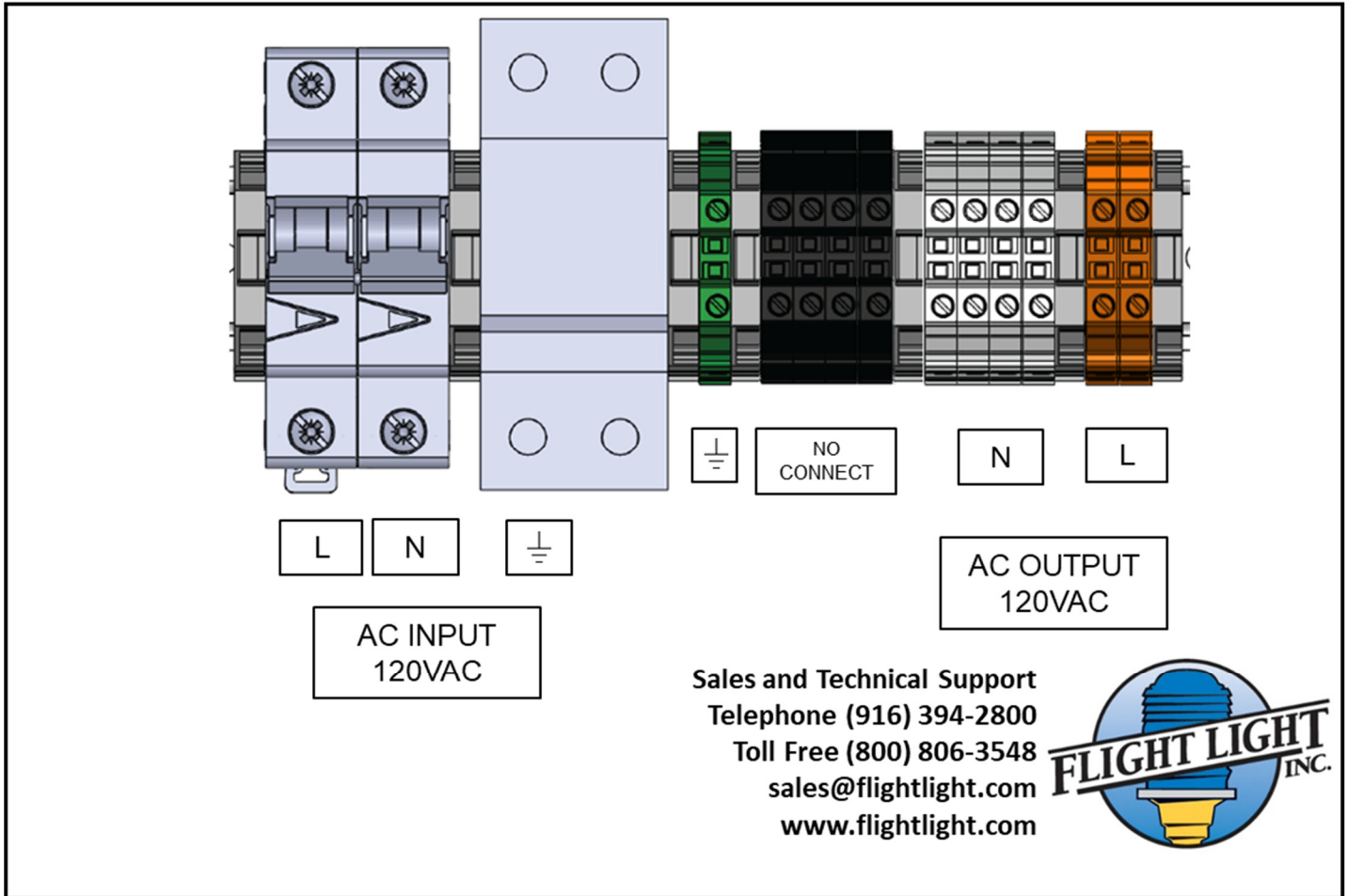
AC Input Wiring: Circuit Breaker
"AC Line", 10A Circuit Breaker for Line (Terminal 2)
"Neutral", 10A Circuit Breaker for Neutral (Terminal 4)
"Ground", Surge Arrestor
AC Load Wiring: Terminal Block Connections
Orange Terminal Block: Load Line
White Terminal Block: Load Neutral
Green / Yellow Terminal Block: Load Ground

Table 1: Controller Wiring Instructions



Heliport AC Controller with Timer Installation Instructions

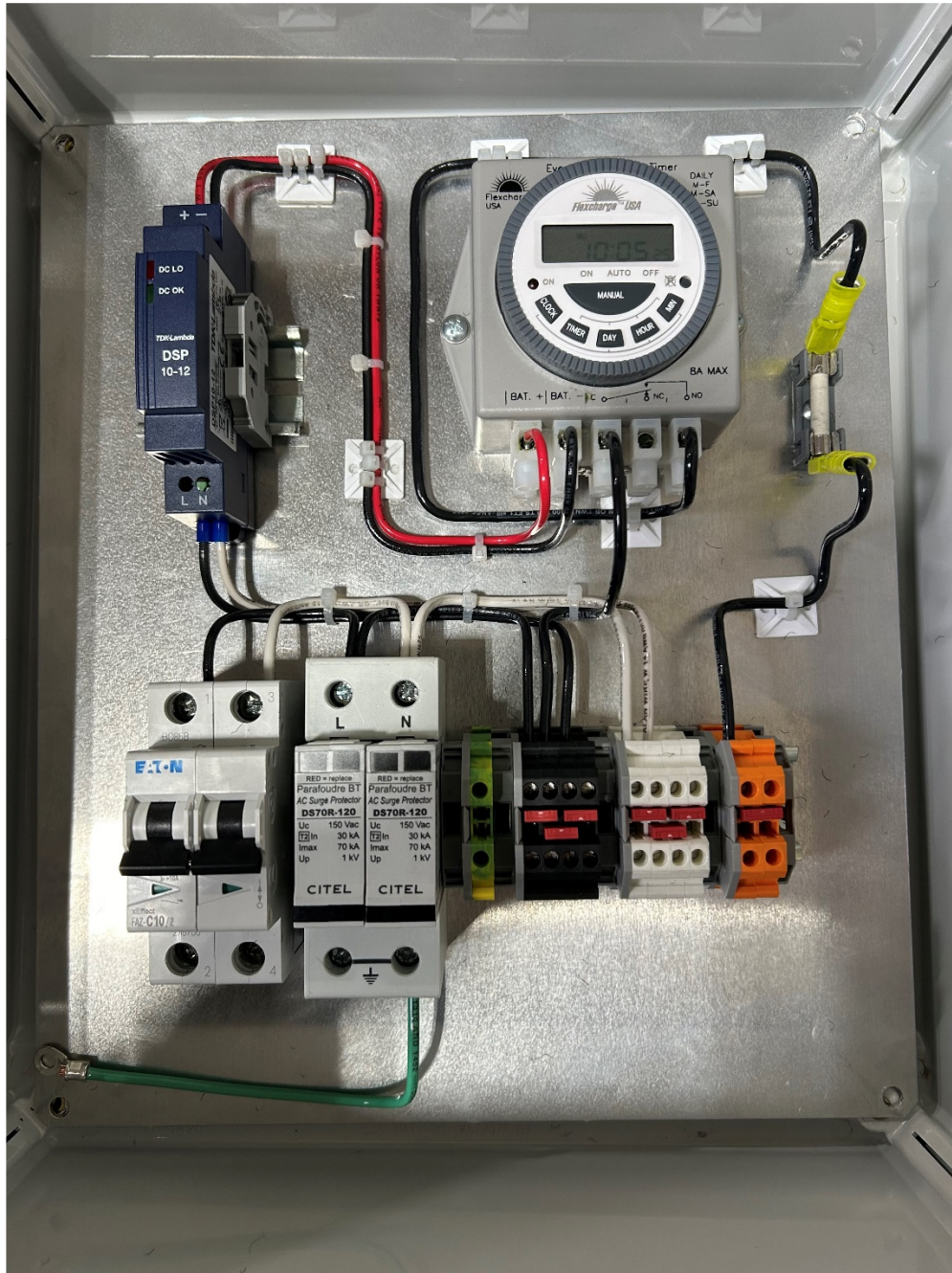
HL-HSC-AC1ACT





Heliport AC Controller with Timer Installation Instructions

HL-HSC-AC1ACT





Heliport AC Controller with Timer Installation Instructions

HL-HSC-AC1ACT

Programming the Programmable Timer

SETTING TIME:

Set the clock to your local time and the day of the week.

- 1) Press and hold the **CLOCK** button.
- 2) Set the day of the Week by pressing the **DAY** key until the correct day appears.
- 3) Set the **HOUR** by pressing the **HOUR** key until proper hour appears. (24 hour time)
- 4) Set **MINUTE** by pressing the **MIN** key until the proper minute appears

When the time and day is set, release the **CLOCK** key

PROGRAMMING:

It is not necessary to use all 8 event pairs but you will need to set both one ON time and one OFF time for each event.

1) Pressing the **TIMER** key will enter the Program mode. Pressing the **TIMER** key will scroll through the events. Stop on the event you want to set. There are 8 events and an ON and OFF time for each event. Only set the events you need. All others can remain blank.

2) Press **DAY** key to select the day or group of days. Press the **HOUR** key to set the hour and the **MIN** key to set the minute. To clear the event, press the **DAY** key then press and hold the **TIMER** key until the setting clears. Always set an **OFF** time for each **ON** time. It is possible to have one **OFF** event for several **ON** events. For example, if you have a light that comes on at different times each day but is to be **OFF** at the same time every day. One **OFF** event is all that is needed as long as it covers all of the **ON** days.

When the programming is complete, press the **CLOCK** key.

The **MANUAL** key will select **ON**, **AUTO**, and **OFF**. For Automatic operation it must be set to **AUTO**. You can manually turn the load **ON** and **OFF** by selecting **ON** or **OFF**. Watch the ___ cursor along the bottom edge of the display window and stop it over the function you want. All programming and time can be reset to New settings by pushing the **RESET** button with a pencil or pen. **Use caution, all programming will be lost when this button is pushed.**



Heliport AC Controller with Timer Installation Instructions

HL-HSC-AC1ACT

System Trouble Shooting

If your system does not operate as expected here are some suggestions to help locate the source of the problem:

- a. Input Voltage Verification: With the circuit breaker in the OFF position, verify that you have your expected AC voltage between the circuit breaker Line and Neutral inputs. If your system does not pass this test you may have a problem with your input wiring or voltage source.
- b. Controller Output Verification: With the circuit breaker in the ON position and the Timer program ON, verify that you have your expected AC voltage between the orange terminal block (Line) and the white terminal block Neutral. If your system does not pass this test you may have a problem with the Timer or the Timer Program.
- c. If your system passes steps b and c, you may have a problem with your load wiring or devices. A test light bulb (with the same voltage rating as your supply) may be used for testing between the orange and white terminal blocks.

Replacement Parts List

You may contact Flight Light, Inc at (916) 394-2800 for replacement parts.