

Heliport High Power LED Floodlight (HL-HPFLED)

Applications

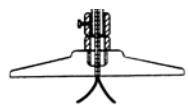
Our high power LED floodlight is specially designed for helipads, providing uniform surface lighting for landing and loading activities. The floodlight includes a 2" anodized aluminum breakable coupling (75-59E) and may be mounted on a base plate, floor flange or stake, sold separately.

Features

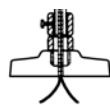
- Field adjustable power (140/100W) & color (3000/4000/5000K)
- Die cast aluminum housing with glare shield and coupling
- Heavy-duty slipfitter and trunnion mount options included
- 3 lenses supplied: NEMA 7H x 6V installed, 6H x 6V & 5H x 5V
- Optic swap capability for quick, tool-free lens change
- Field adjustable tilt angle maximizes helipad illumination
- UL Certified for wet locations; IP65 rated
- Meets FCC Part 15, Part B, Class A standards for conducted and radiated emissions
- 3-pin twist lock photocell and shorting cap included with NEMA/ANSI C136.10 3-pin twist lock receptacle
- LED chip lifetime: L70 >100,000 hrs @ 77°F (25°C) ambient fixture temperature
- 0-10V dimming driver with 12V AUX power tap and 6kV surge protection
- Ambient operating temperature: -40°F to 122°F (-40°C to 50°C)
- Power factor: >.95
- THD: <20%



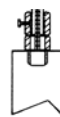
Heliport High Power LED Floodlight (base plate sold separately)



Base Mounted
8.5" or 12"
Base Plate
(sold separately)



Floor Flange Mounted
6.5" Floor Flange
(sold separately)



Stake Mounted
30" Angle-Iron Mounting Stake
(sold separately)



Field adjustable power (140/100W) & color (3000/4000/5000K)



3-pin twist lock photocell included for dusk-to-dawn operation

Specifications

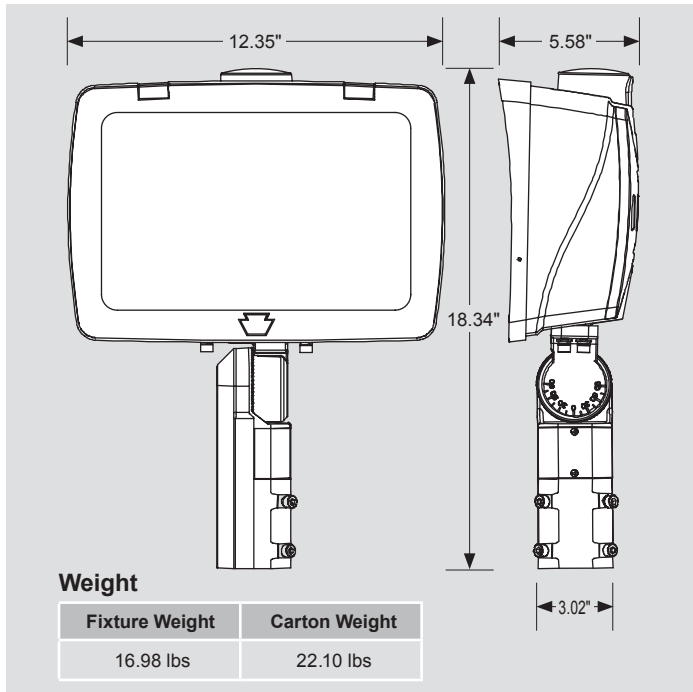
Product #	Selectable Wattage	Selectable CCT	Lumen Output	Efficacy	Input Voltage	CRI	Dimming	Mounting	Photocell	Rated Life	Legacy Equivalent
HL-HPFLED	140W	3000K	18,200	130 lm/W	120 - 277V	>80	0-10V	Universal: Slipfitter & Trunnion Mounts Included	Included	50,000 Hours	400W MH
		4000K	21,000	150 lm/W							
		5000K	19,600	140 lm/W							
	100W	3000K	14,000	140 lm/W							
		4000K	16,000	160 lm/W							
		5000K	15,000	150 lm/W							

+1.800.806.3548 USA
+1.916.394.2800 Worldwide

www.flightlight.com
sales@flightlight.com

Flight Light Inc., 2708 47th Ave.
Sacramento, CA, 95822, USA

Dimensions (shown without glare shield and coupling)



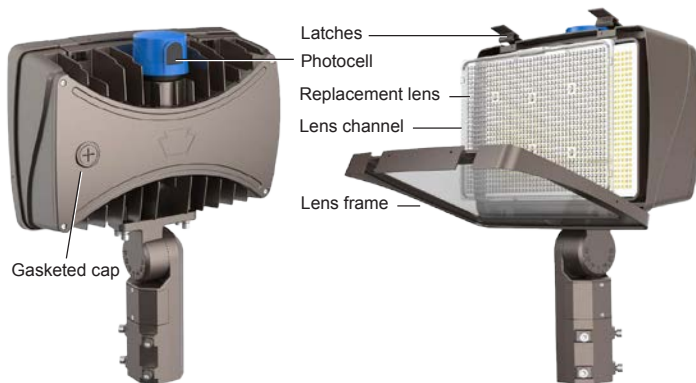
BA-6806K125-Y

6.5" Rigid Floor Flange (2" Thread)

Used for mounting helipad floodlights to concrete, asphalt, decks or metal platforms.

Specifications

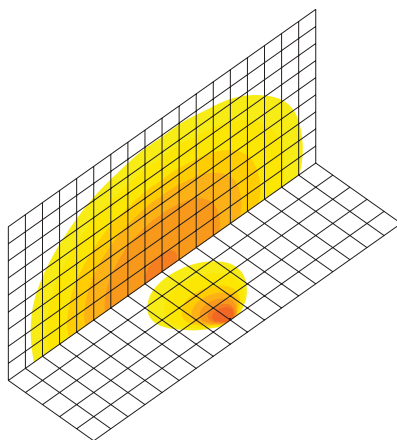
- Colors: Yellow, Red, Silver, Marine Treated
- Height: 1.3125"
- Top Dimensions: 3.3125" OD, 2" ID
- Bottom Dimensions: 6.5" OD
- Bolt Circle: 5"
- Bottom Flange Bolts: 8 bolts not included: flat head, 5/8-16 x required depth
- Thread: 2" NPT
- Material: Forged black steel
- Part #: BA-6806K125



Photometrics (7H x 6V installed)

Ground mounted 6" above ground, 40' from building | Aimed 10° above horizontal

- 0.1 fc
- 0.2 fc
- 0.5 fc
- 1.0 fc
- 2.0 fc
- 5.0 fc
- 10.0 fc



BA-2202

L-895 Mounting Stake (2" Thread)

Galvanized mounting stake is driven into the ground to provide a stable base.

Specifications

- Galvanized to ASTM-A123/A123M-02
- 2" - 11-1/2 NPS
- Length (mm): 30" (762)
- 3.5" diameter hub
- Part #: BA-2202

