

HL-690L LED Stainless Steel Helideck/Helipad Semi-Flush Perimeter Inset Light

Compliances

- FAA AC 150/5390-2D Heliport Design Guide
- Exceeds FAA AC 150/5390-2D Appendix G Specifications
- ICAO Annex 14, Volume II for TLOF and FATO
- Transport Canada TP14371, AGA 7.16
- IP68 Ingress Protection
- IK10 Impact Protection
- CE and RoHS Certified

Applications

Semi-flush perimeter light helps mark helipad touchdown and lift-off area (TLOF) and/or final approach and takeoff area (FATO) for metal helidecks and pavement heliports.

Features

- Robust stainless steel construction provides corrosion protection from salt, chemicals, and weather exposure
- IP68 water and dust resistant
- Sealed LED/electronics maximizes LED life
- Snowplow-safe design prevents lens damage
- Lens made from durable, UV-stabilized LEXAN polycarbonate
- Recessed, semi-flush mounted, allows for obstruction-free movement of equipment and personnel
- Rises only 0.6" (15 mm) above surface
- High static load rating (44,000 lb.) reduces likelihood of damage from helicopters
- 360° high intensity, omnidirectional lighting coverage
- With our Dimming Controller option, the lights can be dimmed at night to reduce glare - 3 brightness levels
- Available for FAA (Green) or ICAO (White)
- Cost-saving, energy-efficient LEDs; 50,000 hour LED lifetime
- 850nm infrared LEDs optional
- AC or DC power supply options

Specifications

- Voltage Range: 10-32 VDC or 85-305 VAC
- Power Consumption: DC Input = 14W; IR DC Input = 15W; AC Input = 14W; IR AC Input = 15W

Ordering Codes

| Fixture | LED Color | Power | Cable Layout | Options |
|----------------|--|--|--|---------------------------------|
| HL-690L | G: Green ¹ B: Blue R: Red W: White Y: Yellow IR: Infrared ² | AC: 100-240VAC AC3: 277VAC DC: 10-30VDC DCD: 10-30VDC Dimming | G1C: 1 Gland with Cable G2C: 2 Glands with Cable ³ G2NC: 2 Glands with No Cable ⁴ | NB: No Base ⁵ |

¹ Green is currently the recommended color for heliport perimeter lights.

² Infrared must be used in conjunction with visible LEDs. Infrared does not dim with the "DCD" dimming option.

³ G2C Layout will not support dimming option. Specify cable size so we can quote correct secondary connector.

⁴ G2NC Layout: Customer must supply water resistant cable. Cable connections are made inside the fixture.

⁵ The fixture will not be mounted to a base can. Please note, the FAA recommends base cans for heliport installations.



- Requires water resistant UL Cable, OD = 0.24" - 0.47" (6-12mm). Recommended AWG (varies by application): 16-3/C SOOW 600V 90C.
- Temperature Range: -13°F/+185°F (-25°C/+85°C)
- LED Quantity: 6 LEDs (Green, Blue, Red, White, Yellow); optional 3 LEDs (Infrared)
- Infrared Wavelength: 850nm, Night Vision Goggle (NVG) Compatible
- Top Material: Hard duplex stainless steel alloy with high corrosion resistance and hardness
- Bottom Material: Gray painted aluminum AlSi12
- Light Output: Polycarbonate window
- Rising Above Surface: 0.6" (15 mm)
- Static Load: Holds 1,000 PSI
- High Static Load Rating: 44,000 lb. min
- Weight: 11.2 lb. (5.1 kg)
- Diameter: 8.6" (219 mm)
- Bolt Circle: 7.25" (184 mm)
- Protection Index: IP68, IK10

+1.800.806.3548 USA
+1.916.394.2800 Worldwide

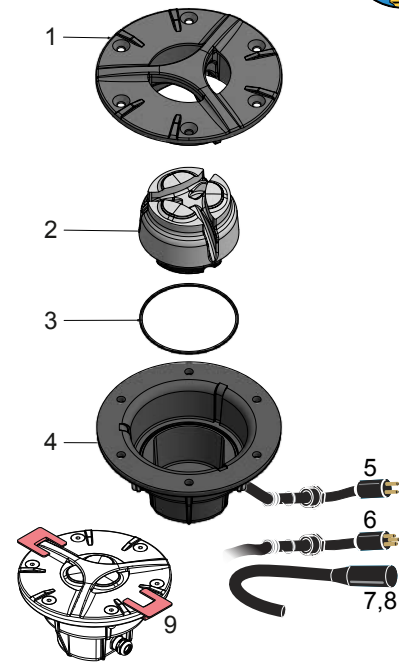
www.flightlight.com
sales@flightlight.com

Flight Light Inc., 2708 47th Ave.
Sacramento, CA, 95822, USA

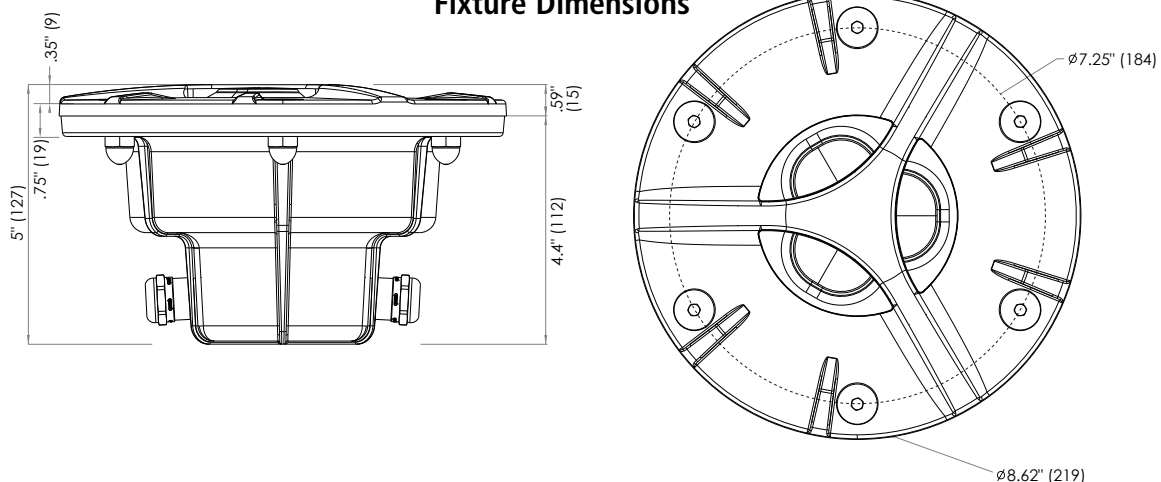
Common Replacement Parts

| Ref. | Description | Part # |
|------|---|-------------------|
| 1 | Top Casting Stainless Steel | HL-690L-TOP |
| 2 | AC Light Module | HL-690/2L-XAC* |
| | DC Light Module | HL-690/2L-XDC* |
| | DCD Light Module | HL-690/2L-XDCD* |
| | AC+IR Light Module | HL-690/2L-XIRAC* |
| | DC+IR Light Module | HL-690/2L-XIRDC* |
| | DCD+IR Light Module (infrared does not dim) | HL-690/2L-XIRDCD* |
| 3 | O-Ring | HL-690/2L-ORING |
| 4 | Bottom Casting | HL-690/2L-BOTTOM |
| 5 | 2-Pin Male Connector | TRC-10518-114D02 |
| 6 | 3-Pin Male Connector (DCD Dimming only) | 80-013031 |
| 7 | 2-Conductor Female Connector | TRC-10519-07-021 |
| 8 | 3-Conductor Female Connector (DCD Dimming only) | 80-012022 |
| 9 | Installation Accessories for Non-base Installation (2 per fixture) | HL-690/2-IA |

* For light modules, X = Color (G = Green, B = Blue, R = Red, W = White, Y = Yellow)



Fixture Dimensions



Photometric Comparison with Requirements

| FAA | | |
|----------------------|-----------------------------|---------------|
| Vertical Angle (Deg) | HL-690L Avg. Intensity (Cd) | FAA Spec (Cd) |
| 0° | 22.1 | 10 |
| 15° | 162.0 | 10 |
| 16° | 181.7 | 5 |
| 60° | 52.3 | 5 |
| 90° | 18.2 | 5 |

| ICAO TLOF | | |
|----------------------|-----------------------------|----------------|
| Vertical Angle (Deg) | HL-690L Avg. Intensity (Cd) | ICAO Spec (Cd) |
| 2° | 42.6 | 15 |
| 5° | 74.74 | 30 |
| 10° | 107.0 | 15 |
| 13° | 137.6 | 8 |
| 20° | 178.4 | 3 |

| ICAO FATO | | |
|----------------------|-----------------------------|----------------|
| Vertical Angle (Deg) | HL-690L Avg. Intensity (Cd) | ICAO Spec (Cd) |
| 0° | 45.4 | 10 |
| 3° | 110.3 | 100 |
| 10° | 201.0 | 100 |
| 20° | 152.1 | 100 |
| 25° | 139.9 | 50 |
| 30° | 65.0 | 10 |

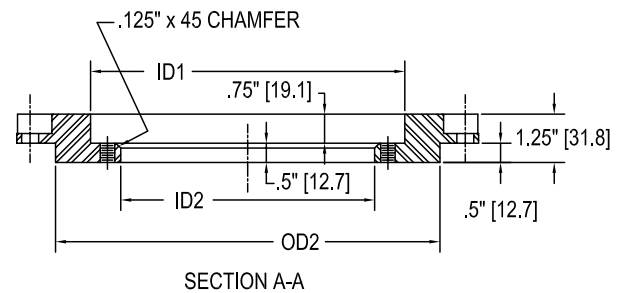
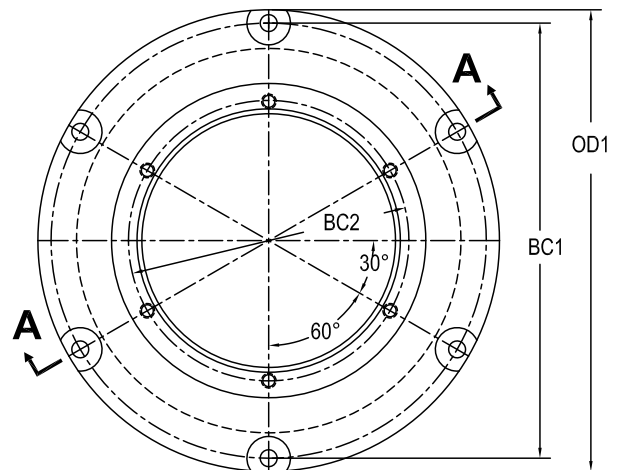
HL-690L / HL-692L Adapter Ring for 12" L-868B Base Cans

Compliance and Applications

HL-690L / HL-692L adapter ring for mounting 8" diameter (7.25" BC) inset fixture to 12" L-868B base can.

Specifications

- Ductile iron castings with a black powder coat finish
- (6) 7/16" Ø equally spaced, thru holes with 1-1/8" Ø x 1/2" deep counter bore
- (6) 3/8"-16 tapped holes
- Adapter rings are shipped with:
 - (2) 3/8"-16 x 1-1/4" stainless hex head cap screws
 - (2) 3/8", 2 piece locking washers
 - (1) Bolt Set containing:
 - + (6) 3/8"-16 x 1" stainless hex head cap screws
 - + (6) 3/8", 2 piece locking washers



Ordering Codes

| Part # | OD1 | BC1 | OD2 | ID1 | BC2 | ID2 |
|--|--------------------|-------------------|-------------------|------------------|------------------|-------------------|
| BA-690/2L-ADAPTER 12" L-868B | 11.938" (303.2) | 11.25" (285.8) | 9.938" (252.4) | 8.75" (222.3) | 7.25" (184.2) | 6.563" (166.7) |

The BA-690/2L-ADAPTER is different from Jaquith's AA122820 adapter ring and cannot be used interchangeably. (length in mm)

+1.800.806.3548 USA
+1.916.394.2800 Worldwide

www.flightlight.com
sales@flightlight.com

Flight Light Inc., 2708 47th Ave.
Sacramento, CA, 95822, USA

