

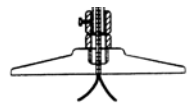
Heliport High Power LED Floodlight (HL-HPFLED)

Applications

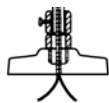
Our high power LED floodlight is specially designed for helipads, providing uniform surface lighting for landing and loading activities. The floodlight includes a 2" anodized aluminum breakable coupling (75-59E) and may be mounted on a base plate, floor flange or stake, sold separately.

Features

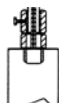
- Field adjustable power (140/100W) & color (3000/4000/5000K)
- Die cast aluminum housing with included glare shield
- Precision-crafted optics lens, NEMA 7H x 6V beam spread
- Field adjustable tilt angle maximizes helipad illumination
- Heavy-duty slipfitter and trunnion mount options included
- UL and DLC 5.1 listed, IP65 rated
- Meets FCC Part 15, Part B, Class A standards for conducted and radiated emissions
- 3-pin twist lock photocell and shorting cap included with NEMA/ANSI C136.10 3-pin twist lock receptacle
- LED chip lifetime: L70 >100,000 hrs @ 77°F (25°C) ambient fixture temperature
- 0-10V dimming driver with 12V AUX power tap and 6kV surge protection
- Ambient operating temperature: -40°F to 122°F (-40°C to 50°C)
- Power factor: >.95
- THD: <20%
- Height: 21"; Weight: 16.1 lb. (includes glare shield & coupling)
- Warranty: 5 Years



Base Mounted
8.5" or 12"
Base Plate
(sold separately)



Floor Flange Mounted
6.5" Floor Flange
(sold separately)



Stake Mounted
30" Angle-Iron
Mounting Stake
(sold separately)



*Heliport High
Power LED
Floodlight
(base plate
sold separately)*



*Field adjustable power
(140/100W) & color
(3000/4000/5000K)*



*3-pin twist lock photocell
included for dusk-to-dawn
operation*

Specifications

Product #	Selectable Wattage	Selectable CCT	Lumen Output	Efficacy	Input Voltage	CRI	Dimming	Mounting	Dist Pattern	Photocell	Rated Life	Legacy Equivalent
HL-HPFLED	140W	3000K	17500	125 lm/W	120 - 277V	>80	0-10V	Universal: 2-3/8" Slip Fitter or Trunnion	7H x 6V	Included	50,000 Hours	400W MH
		4000K	20300	145 lm/W								
		5000K	18900	135 lm/W								
	100W	3000K	13500	135 lm/W								
		4000K	15500	155 lm/W								
		5000K	14500	145 lm/W								

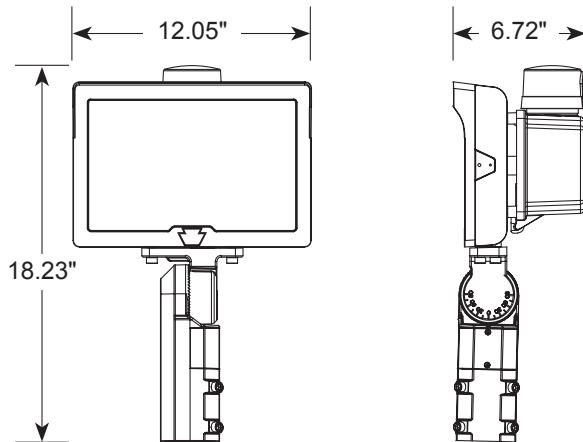
+1.800.806.3548 USA
+1.916.394.2800 Worldwide
+1.916.394.2809 Fax

www.flightlight.com
sales@flightlight.com

Flight Light Inc., 2708 47th Ave.
Sacramento, CA, 95822, USA

Product specifications may be subject to change without prior notice. Verify current specifications when ordering. © Flight Light Inc. | 2/23/2023

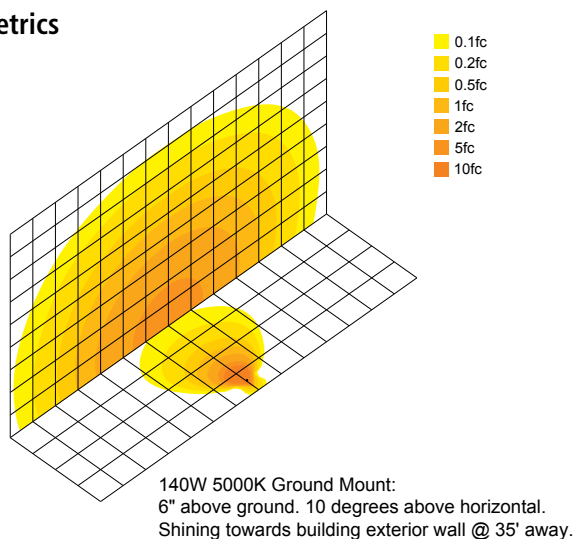
Dimensions (shown without glare shield and coupling)



Exploded View (shown without glare shield and coupling)



Photometrics



BA-6806K125-Y

6.5" Rigid Floor Flange (2" Thread)

Used for mounting helipad floodlights to concrete, asphalt, decks or metal platforms.

Specifications

- Colors: Yellow, Red, Silver, Marine Treated
- Height: 1.3125"
- Top Dimensions: 3.3125" OD, 2" ID
- Bottom Dimensions: 6.5" OD
- Bolt Circle: 5"
- Bottom Flange Bolts: 8 bolts not included: flat head, 5/8-16 x required depth
- Thread: 2" NPT
- Material: Forged black steel
- Part #: BA-6806K125



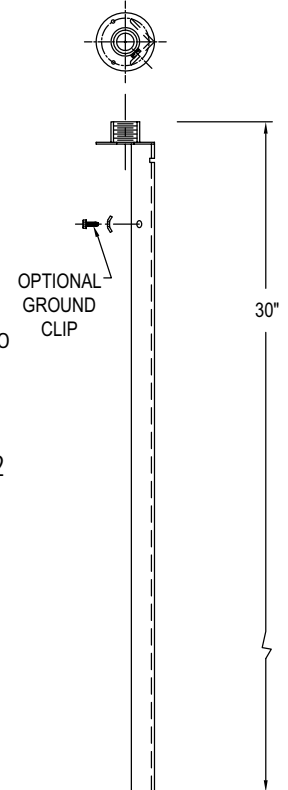
BA-2202

L-895 Mounting Stake (2" Thread)

Galvanized mounting stake is driven into the ground to provide a stable base.

Specifications

- Galvanized to ASTM-A123/A123M-02
- 2"-11-1/2 NPS
- Length (mm): 30" (762)
- 3.5" diameter hub
- Part #: BA-2202



- Dimensions: 8.5" diameter x .25" thick
- Bolt Circle: 7.25"
- 2" NPS
- Material: Hot rolled steel
- Finish: Aviation yellow powder coat
- Includes (6) 3/8-16 x 1" stainless steel hex head cap screws
- Part #: BA-1932AA-25

