



Flight Light Inc.
2708 47th Ave.
Sacramento, California, U.S.A.
95822-3806

PH (916) 394-2800 FX (916) 394-2809
TF (800) 806-3548 EM sales@flightlight.com

HL-492L **6" Helideck/Helipad Semi-Flush** **Perimeter Inset Light**

- Compliances**
- FAA AC 150/5390-2C Heliport Design Guide
 - Exceeds FAA Engineering Brief 87 Specifications
 - ICAO Annex 14, Volume II for TLOF
 - UL 1598 Standard (only "ACUL" lamp is UL listed)
 - Transport Canada TP14371, AGA 7.16
 - IP67 Compliant
 - Buy American Act Compliant

Applications

Semi-flush perimeter light helps mark helipad touchdown and lift-off area (TLOF) and/or final approach and takeoff area (FATO) for metal helidecks and pavement heliports.

Why Our HL-492L is Better

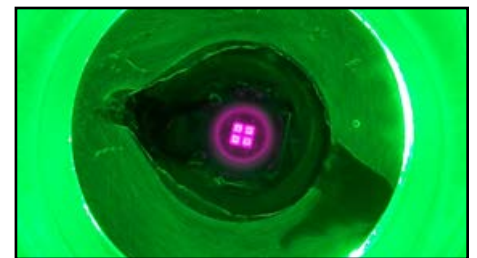
- Recessed, semi-flush mounted, allows for obstruction-free movement of equipment and personnel.
 - Small 6" [15.24 cm] fixture easily drops into metal helideck, fastens with 4 bolts.
 - Corrosion resistant hard anodized finish suitable for marine environments and available in many different colors.
 - Fixture sealed to bottom cover to prevent moisture intrusion.
 - Lightweight and robust aluminum alloy construction.
 - Prism removal and replacement achieved without need for adhesives or sealants.
 - Pre-focused optics simplify maintenance.
 - Cost-saving, energy-efficient LEDs.
 - Power adapter included.
 - Low maintenance - LED light source has 50,000 hour lifetime (50X longer than halogen).
 - Monochromatic output of LEDs is more conspicuous than halogen.
 - Pilots prefer LED over halogen because of increased visibility.
 - Direct retrofit, drop in replacement. Factory retrofits available for your existing halogen fixtures.
 - With our Dimming Controller option, the lights can be dimmed at night to reduce glare - select from three brightness levels.
 - Available in 10-30VDC, 120-240VAC or 277VAC versions.
- Available for non-heliport applications such as architectural lighting.



Hard Anodized for Corrosion Resistance: Custom colors are available to match your design specifications.

Specifications

- Anodization: Aluminum Fixtures, machined stock 6061T6. Hard Anodized Mil 8625 Type III, 1 mil thick; Class 1 for clear, Class 2 for color.
- Low profile: .86" [2.18 cm] (base can mounted), 1.11" [2.82 cm] (helideck mounted).
- Diameter: 6" [15.24 cm]
- Bolt circle: 5.25" [13.34 cm]
- Power consumption: AC input = 7.2VA; DC input = 4W; IR AC input = 10.8VA; IR DC input = 7.2W
- Light channel within .2" (.51 cm) of grade.
- Fixture grounding: internal.
- Includes 48" [122 cm] of UL SO Cable 16AWG (UL Version).
- Weight: 3.1 lb. (1.4 kg). Carton size: .3 cu. ft. (.008 cu. meters); 8" (d) x 8" (w) x 8" (h) (20.3 cm (w) x 20.3 cm (d) x 20.3 cm (h))
- Temperature range: -4°F/+131°F (-20°C/+55°C).



Visible/Infrared LED Option

- Night Vision Goggle (NVG) compatible.
- Infrared Output:
 - Exceeds SAE Aerospace recommendations for Landing/Taxi Lights.
 - Usable beam width: 55° to 125° vertical, 360° horizontal.
 - Output wavelength: 850nm.
 - Infrared does not dim with the "DCD" dimming option.
- Visible Output:
 - Exceeds ICAO TLOF requirements for green LEDs (see photometric chart).
 - Usable beam width: 30° vertical, 360° horizontal.
 - Output wavelength: 530nm.

Visit our web site: www.flightlight.com



Flight Light Inc.
 2708 47th Ave.
 Sacramento, California, U.S.A.
 95822-3806

PH (916) 394-2800 FX (916) 394-2809
TF (800) 806-3548 EM sales@flightlight.com

HL-492L 6" Helideck/Helipad Semi-Flush Perimeter Inset Light

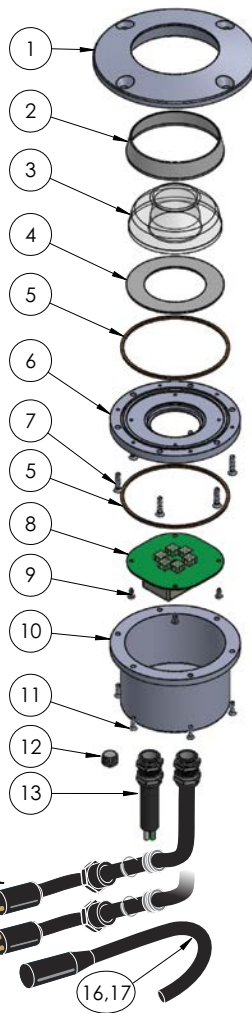
Common Replacement Parts

- | | |
|--|----------------------|
| 1.....HL-492L Top Casting..... | 16-492MA |
| 2.....Prism Gasket | 65-033090 |
| 3.....Clear Prism Dome | 20-016080 |
| 4.....Prism Clamp Teflon Gasket | 27-492CG |
| 5.....O-ring..... | 27-9396K175 |
| 6.....HL-492L Prism Clamp | 16-492-PLTMA |
| 7.....8-32 0.75" Long Screws..... | NS-S0832X063PFMSP |
| 8.....AC LED Replacement Kit..... | HL-XL9KITB-AC* |
| ALT ...DC LED Replacement Kit | HL-XL9KITB-DC* |
| ALT ...UL LED Replacement Kit..... | HL-XL9KITB-UL* |
| ALT ...Dimming LED Replacement Kit | HL-XL9KITB-D* |
| 9.....No. 6 Screws | NS-S0632X025PPMSP |
| 10.....HL-492L Bottom Casting..... | 16-492-BOTTOM2 5/8ma |
| 11.....6-32 0.5" Long Screw | NS-S0632X050PFMSP |
| 12.....Pipe Fitting..... | HA-PP000001 |
| 13.....UL Cable Assembly | 20-CABLE-ASSY-UL |
| 14.....2-Pin Male Connector | TRC-10518-117D002** |
| 15.....3-Pin Male Connector (DC Dimming only) .. | 80-013031** |
| 16.....2-Conductor Female Connector | TRC-10519-07-021** |
| 17.....3-Conductor Female Connector (DC Dimming only) .. | 80-012022** |

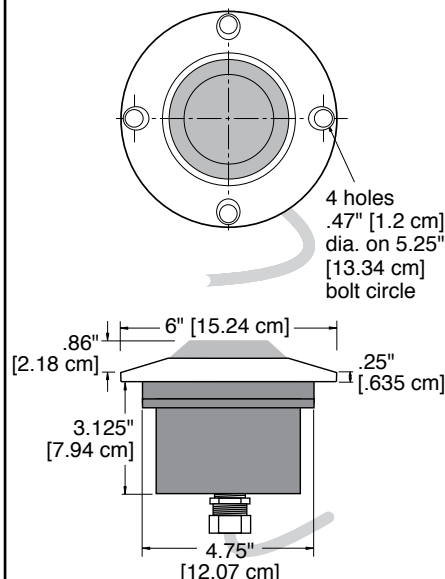
* For LED Replacement Kits, X = Color
 ** Not UL listed.

Base Can

A 6" [15.24 cm] deep base can is required for pavement in-
 stallations. Part #: BA-525-6



HL-492L PERIMETER LIGHT GENERAL ARRANGEMENT (UL Listed)



Photometric Comparison with ICAO Requirements for TLOF

Vertical Angle (Deg)	Avg. Intensity (Cd)	ICAO Spec (Cd)
2	70.8	15
5	66.5	30
10	48.3	15
13	36.6	8
20	23.9	3

Ordering Codes

Fixture	LED Color	Power/Compliance	Fixture Custom Color ⁵
HL-492L	G: Green (std) ¹ B: Blue R: Red W: White Y: Yellow IR: Infrared ²	AC: 120-240VAC ⁴ AC3: 277VAC ⁴ ACUL: 120-240VAC ³ DC: 10-30VDC ⁴ DCD: 10-30VDC Dimming ⁴	BK: Black B: Blue G: Green R: Red Y: Yellow (hard gold)
HL-492L			

¹ Green is currently the recommended color for heliport perimeter lights.

² Infrared must be used in conjunction with visible LEDs. Infrared does not dim with the "DCD" dimming option.

³ Only "ACUL" lamp option can be UL listed. Connector not included. UL labeled fixtures only available for shipment to U.S. and Canada.

⁴ Lamp option is not UL listed.

⁵ Dark gray hard anodized is the standard finish.

Visit our web site: www.flightlight.com



Flight Light Inc.
2708 47th Ave.
Sacramento, California, U.S.A.
95822-3806

PH (916) 394-2800 FX (916) 394-2809
TF (800) 806-3548 EM sales@flightlight.com

HL-492L
6" Helideck/Helipad Semi-Flush
Perimeter Inset Light

How to Specify the HL-492L LED Helideck Semi-Flush Perimeter Light

The fixture shall be model HL-492L-(LED color)-(voltage) as marked by Flight Light Inc.

Construction:

- The fixture shall be 6" [15.24 cm] diameter, 5.25" [13.34 cm] bolt circle.
- The fixture shall be omnidirectional.
- The fixture shall be aluminum, hard anodized (Type III), 1 mil thick; Class 1 for clear, Class 2 for color.
- The fixture shall have a modular design comprised of 2 major parts: Bottom Casting and Top Casting. The Bottom and Top Casting are sealed by means of a Prism Clamp and O-ring.
- Hardware shall be 304 stainless steel.
- Fixture shall ground internally.
- The fixture shall include 48" [122 cm] of UL SO Cable 16AWG (UL Version).

LED/Light Cavity:

- LED lifetime expectancy: 50,000 hours.
- Power consumption shall not exceed 7.2VA for AC lights, 4W for DC lights, 10.8VA for IR AC lights and 7.2W for IR DC lights.
- Infrared output wavelength: 850nm
- Infrared output usable beam width: 55° to 125° vertical, 360° horizontal
- Visible output wavelength: 530nm
- Visible output beam width: 30° vertical, 360° horizontal

Compliances:

- IP67 Compliant
- Buy American Act Compliant
- FAA AC 150/5390-2C Heliport Design Guide
- ICAO Annex 14, Volume II for TLOF
- Optical performance exceeds FAA Engineering Brief 87 Specifications
- Transport Canada TP14371, AGA 7.16

Options (to be specified per each project):

- Infrared (must be used in conjunction with visible LEDs)
- Dimming (only available with the Flight Light controller)
- UL Listed fixture
- Fixture custom color (default color is dark gray).
- 6" [15.24 cm] Deep Base Can for ground installation.

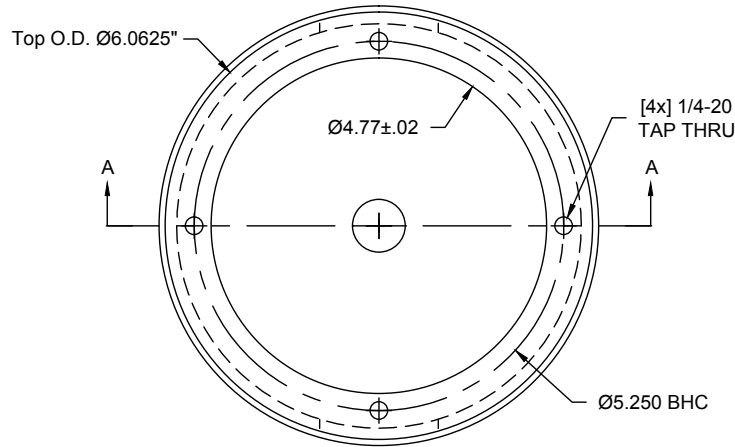
Visit our web site: www.flightlight.com



Flight Light Inc.
2708 47th Ave.
Sacramento, California, U.S.A.
95822-3806

PH (916) 394-2800 FX (916) 394-2809
TF (800) 806-3548 EM sales@flightlight.com

HL-492L 6" Helideck/Helipad Semi-Flush Perimeter Inset Light

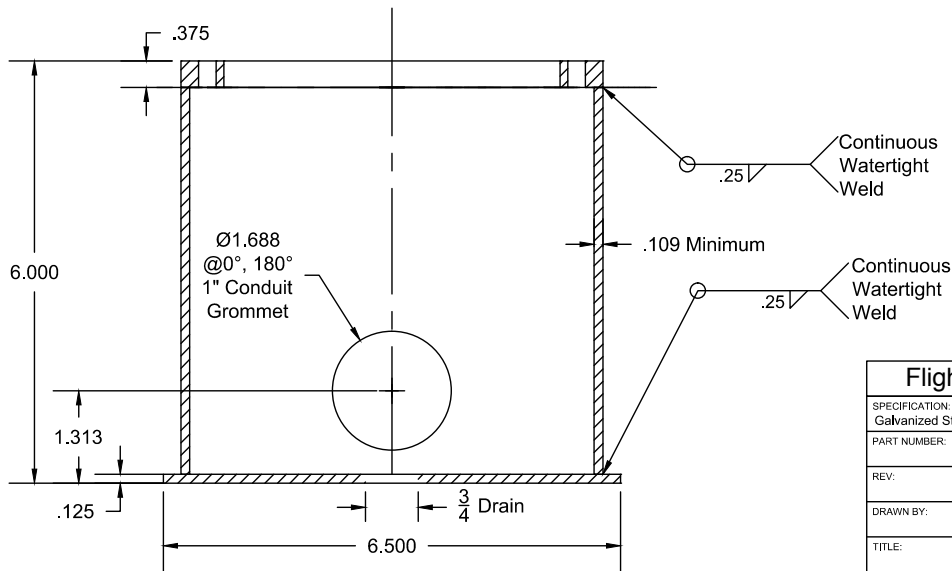


Notes:

- 1.) Grommets are placed @ 0° & 180°
- 2.) Flange Flatness is ± 0.010 [.254mm]
- 3.) 3/4" drain is standard

Additional Product Information:

- 1) Bolt holes are drilled and tapped after galvanizing.
- 2) Conduit holes are located on the bolt hole axis of the flange with an angular tolerance of $\pm 1^\circ$.
- 3) Four 18-8 stainless steel Phillips, Flat Head Countersunk Screws 1/4-20UNC X 1" fully threaded bolts shipped with each container. Wood lid has two holes drilled at 0-180. Two bolts are shipped loose.
- 5) This product is hot dipped galvanized in accordance with standard specifications for zinc coating on iron and steel hardware. ASTM A 153, ASTM A 385, ASTM A123.



x/.x=.030
.xx=.010
.xxx=.005
.xxxx=.0005

All dimensions
in inches
unless otherwise
specified

Flight Light Inc. • www.flightlight.com

SPECIFICATION: Galvanized Steel			
PART NUMBER:			DATE:
REV:	SIZE:	SCALE:	SHEET OF
	A	1:2	1 1
DRAWN BY:	ENGINEER:	CHECKED BY:	
TITLE: 6" Base (P/N BA-525-6)			

Visit our web site: www.flightlight.com