

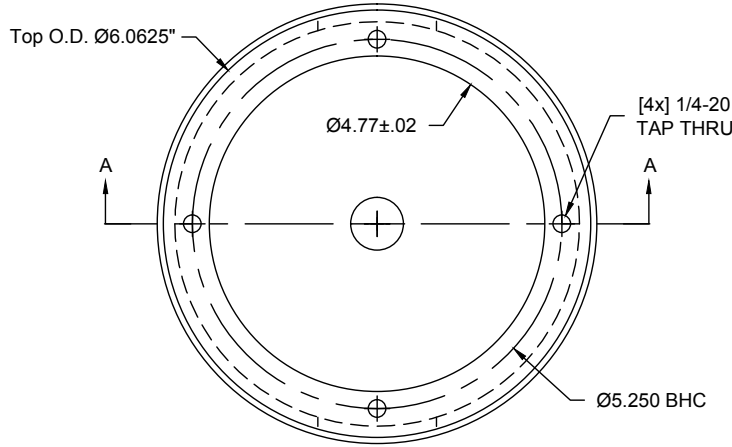


Flight Light Inc.
 2708 47th Ave.
 Sacramento, California, U.S.A.
 95822-3806



PH (916) 394-2800 FX (916) 394-2809
 TF (800) 806-3548 EM info@flightlight.com

6" Deep Base Can (P/N BA-525-6)

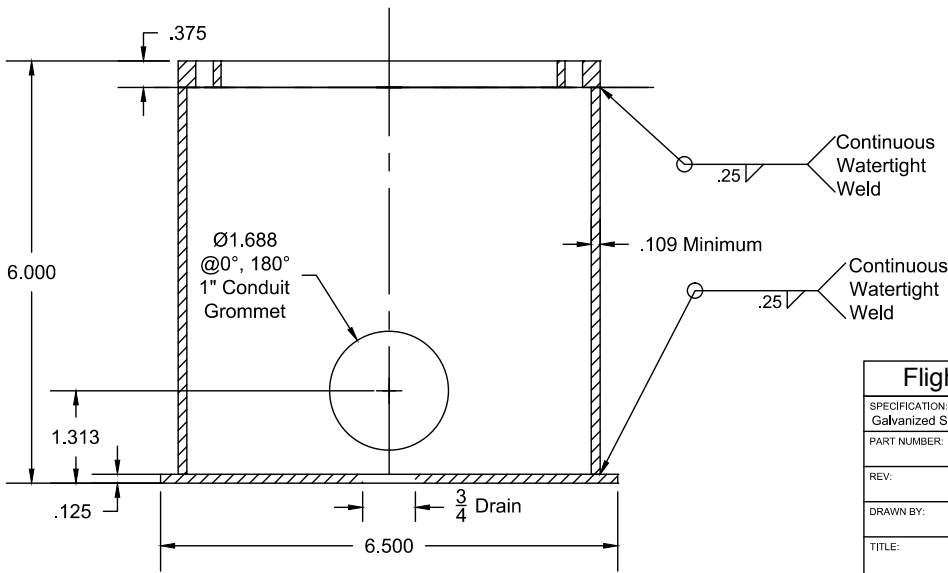


Notes:

- 1.) Grommets holes are placed @ 0° & 180°
- 2.) Flange Flatness is ±.010 [.254mm]
- 3.) 3/4" drain is standard

Additional Product Information:

- 1) Bolt holes are drilled and tapped after galvanizing.
- 2) Conduit holes are located on the bolt hole axis of the flange with an angular tolerance of +/- 1.
- 3) Four 18-8 stainless steel Phillips, Flat Head Countersunk Screws 1/4-20UNC X 1" fully threaded bolts shipped with each container. Wood lid has two holes drilled at 0-180. Two bolts are shipped loose.
- 5) This product is hot dipped galvanized in accordance with standard specifications for zinc coating on iron and steel hardware. ASTM A 153, ASTM A 385, ASTM A123.



x/x=.030
 .xx=.010
 .xxx=.005
 .xxxx=.0005

All dimensions
 in inches
 unless otherwise
 specified

Flight Light Inc. • www.flightlight.com

SPECIFICATION: Galvanized Steel			
PART NUMBER:		DATE:	
REV:	SIZE:	SCALE:	SHEET OF
	A	1:2	1 OF 1
DRAWN BY:		ENGINEER:	CHECKED BY:
TITLE: 6" Base (P/N BA-525-6)			



Visit our web site: www.flightlight.com